

CET PRAGUE AT FAMU

Film Production

Fall 2021 | Spring 2022



PROGRAM BASICS

Dates

FALL 2021

Arrival Date: 08/18/2021

Departure Date: 12/16/2021

SPRING 2022

Arrival Date: 01/12/2022

Departure Date: 05/12/2022

Application Deadlines

FALL 2021: 04/01/2021

SPRING 2022: 10/01/2021

Program Length

17 weeks

Host University

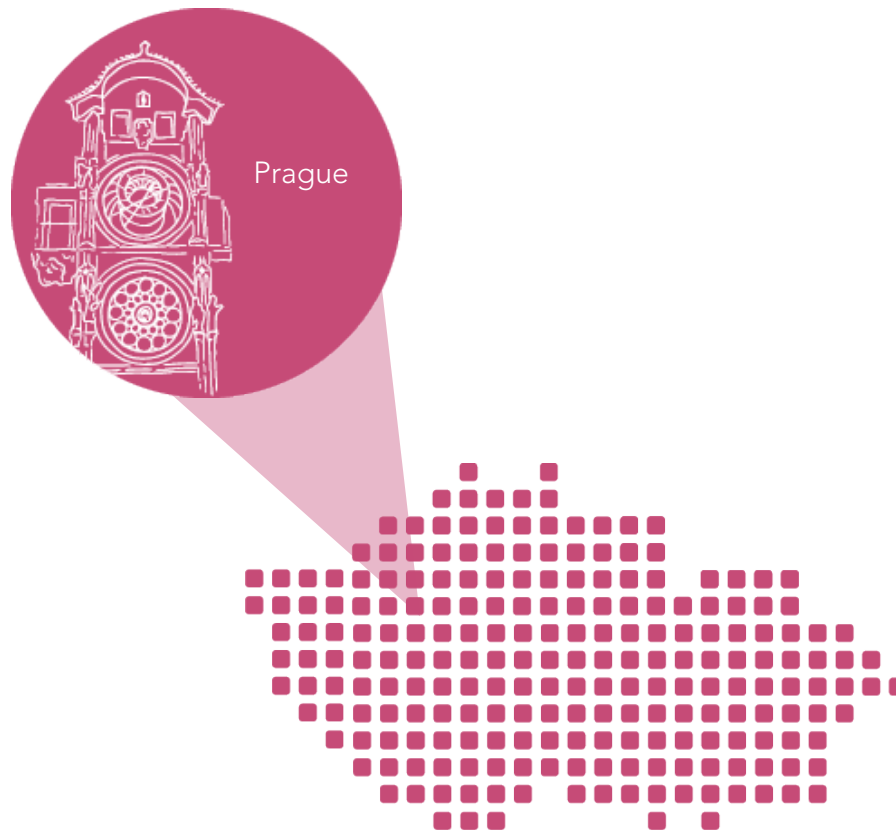
Film and Television School of the Academy of Performing Arts in Prague (FAMU)

Pre-Requisite

Experience with 16mm film (35mm only)

Recommended Credits

12-18



WHY CET AT FAMU?



Create a 7-10 Minute Film



Electives in Filmmaking



Apartments in Central Prague



Supportive On-site Staff

CREATE YOUR OWN FILM. USE PRAGUE AS YOUR BACKDROP.

This program allows you to participate in every aspect of filmmaking—directing, cinematography, casting, screenwriting, producing and editing. If you're in the Narrative program, you produce a film in 16mm or 35mm with your group. Prefer documentary? Shoot your own digital documentary film. Faculty mentors guide you every step of the way. Outside of the classroom, take advantage of all that living in Prague has to offer. This affordable city will charm you and inspire you, all at the same time.

ACADEMICS

NARRATIVE FILM

NARRATIVE FILM: PRE-PRODUCTION AND PRODUCTION

130 hours. 6 credits.

NARRATIVE FILM: POST- PRODUCTION AND FINAL PROJECT

65 hours. 3 credits.

BEGINNING CZECH LANGUAGE

45 hours. 3 credits.

FAMU ELECTIVES

Hours vary. 1 to 3 credits each.

- Direct-enroll in FAMU electives with international students.
- Options may include: Soundtrack Aesthetics, Script Analysis, The Realm of Montage, Film Style and Form, Visual Theory I, and Filming the Unfilmable.

“I am **learning more about film through the perspectives of my classmates as well as my professors.** This is my first time out of America, and I am incredibly **glad that I am studying in Prague,** because it is teaching more about the world, and all it has to offer.”

— Chisom Okoye, Howard University, Spring 2019

HOUSING

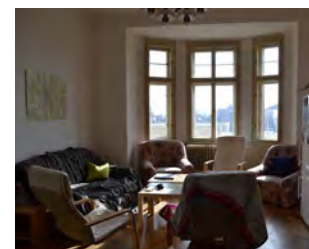
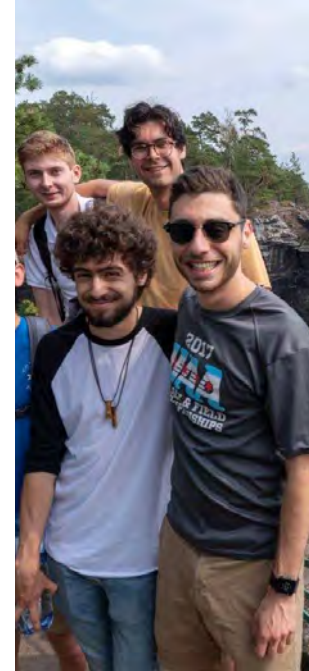
- 🏠 Apartment
- 📍 Off-campus housing
- 👥 Live with CET peers & local Czech students
- 👤 2-6 people/apartment
- 🛏️ 2-3 people/room
- 🍳 Fully equipped kitchen, living room, shared bathroom per 2-3 students, in-unit washer
- 📶 WiFi access, A/C, linens, basic furnishing, kitchenware

LOCAL ROOMMATES

- You share an apartment with other CET students and possibly a Czech roommate. You are close to cafés, public transportation, downtown, and parks—after all, Prague was recently named the greenest city in the world.
- Czech roommates help you get to know the real Prague. They might take you for a hike in the countryside, show you how to cook Czech food, or take you to their favorite cafés in the city.

“I couldn’t **fathom taking the classes central to my project at my home university** – even though I’m majoring in Film/Video Media Studies! This has been a **great taste of what film school could be like.**”

— Isaiah Tulanda, Claremont McKenna College, Spring 2019



GET TO KNOW PRAGUE



Landmarks

Charles Bridge
Prague Castle
Old Town Square



Must-Try Foods

Trdelník, rolled cinnamon-sugar dough
Svíčková, beef served in a creamy sauce
Smažený sýr, fried cheese



Must-See Sights

Explore Prague's many art museums
Check out the John Lennon Wall
Climb to the top of Petřín Hill



Regional Highlights

Ride the train 40 minutes outside of Prague to explore Karlštejn Castle
Take advantage of Prague's central location to check Vienna, Budapest, and other European capitals off your list

ACTIVITIES & EXCURSIONS

- Take a CET-sponsored film-focused excursion to Berlin. Go on a backlot studio tour at Babelsberg Studio. Attend a screening and discussion with young German filmmakers. Explore Berlin's historic sites on your own. Later in the term, attend a film festival in the Czech Republic.
- Get outside of Prague with CET and explore the Czech Republic. Start the term in Český Krumlov with your CET peers then opt into other excursions to nearby Czech towns like Kutná Hora, Jáchymov, and Plzeň.



HOW TO APPLY

1. Start an application at cetacademicprograms.com/czech-republic
2. Complete the application requirements including:
 - Application Form
 - Portfolio Submission
 - Faculty & Study Abroad Office Recommendations
 - Official Transcript

DEADLINES: Fall : April 1 | Spring: October 1

CET SCHOLARSHIPS

CET is committed to making study abroad accessible for all students. We award over \$400,000 every year to students through the following awards:


- Need-Based Scholarships
- Diversity & Inclusion Scholarship
- Academic Excellence Scholarship
- Fund for Education Abroad Access Partner Scholarships

Learn more and apply at cetacademicprograms.com/scholarships-college

YOU MAY ALSO LIKE:

Check out these other CET Programs!

- CET Photography at FAMU
- CET New Media & Audiovisual Studies at FAMU
- CET Prague
- CET Prague: Summer Internship



I learned about how to **direct actors** who are not fluent English speakers, how to **write a script that is adapted for use in another language**, and specific technical differences between US productions and European productions.

— Nora Morris, American University, Spring 2019

PHOTO CREDITS: P1 & P4 right: Megan Massey, Syracuse University; P5 middle: Siena Willis, Smith College; P5 bottom: Abi Weaver, American University; P6-7 top: Jordan Redd, American University; P6-7 middle top: Isaiah Tulunda, Claremont McKenna College; P6-7 middle bottom: Siena Willis, Smith College; P6-7 bottom: Daniel Kunc; P8: Subei Kyle, Kenyon College; All other photos courtesy of CET staff.